

BASE COLOR

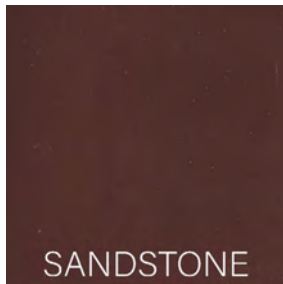
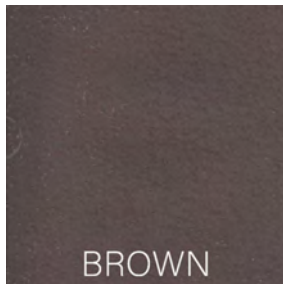
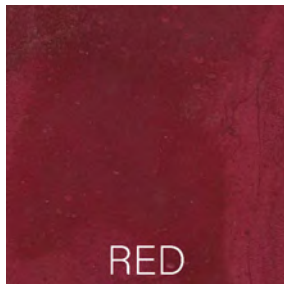
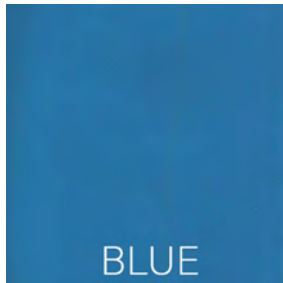
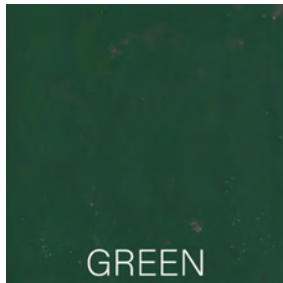
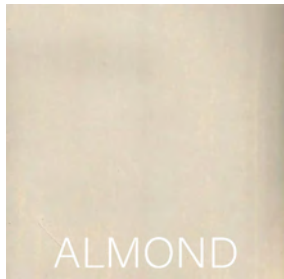
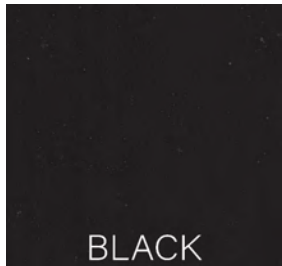
Base Color

Diamond Base Color is only meant to be mixed with Diamond Coat Epoxy. One Diamond Base Color will be enough to color 2 gallons of Diamond Epoxy.

Diamond Base Colors have an expected shelf life of 1 year, if stored correctly.



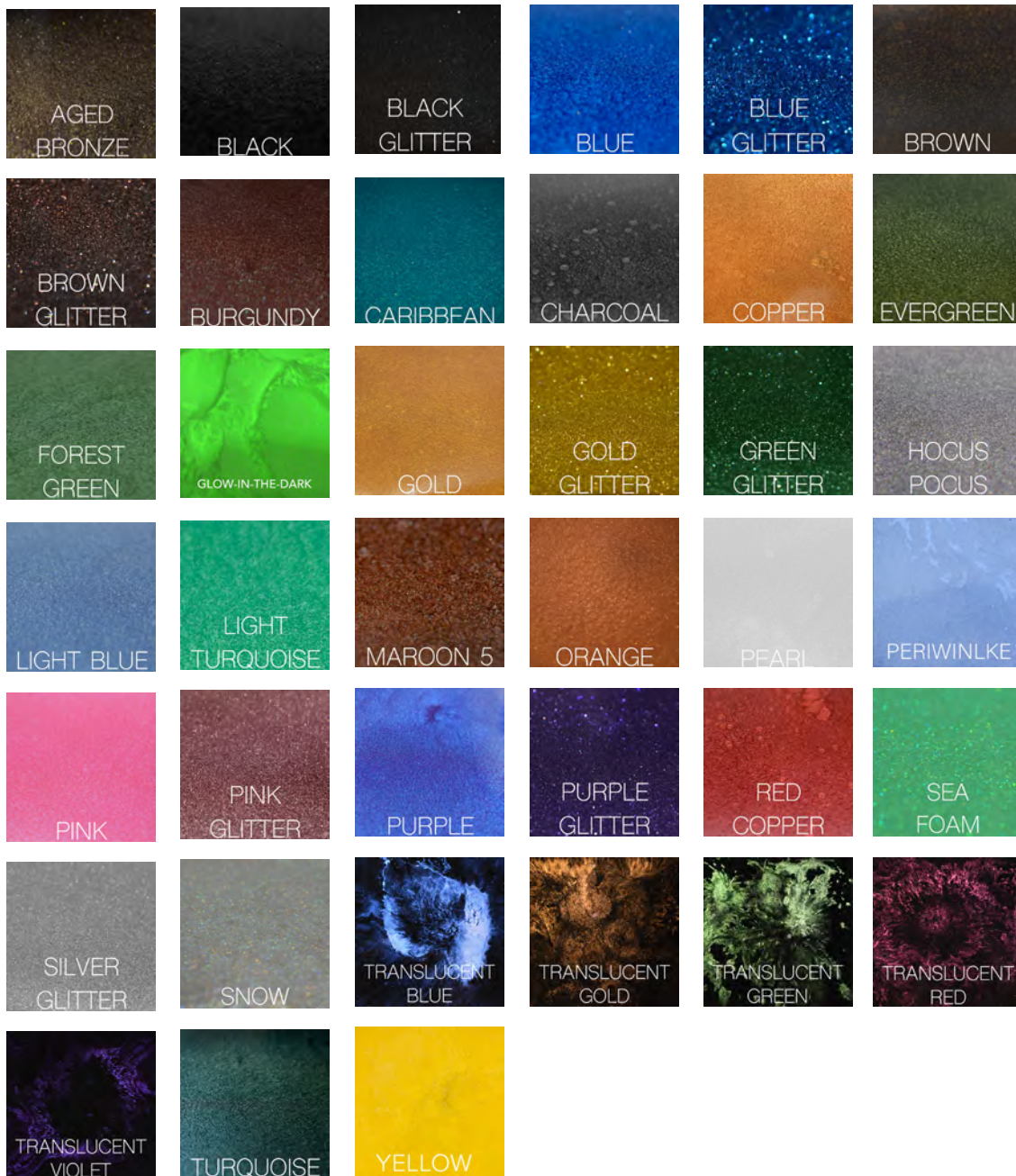
NOTE: Diamond Base Color only cures when mixed into epoxy, if it is applied by itself, it will not dry.



Metallic Powders

Diamond Metallic Powders are 100% compatible with all Diamond Epoxies, as well as all of Diamond Prime Coats. When coating or refinishing countertops, bartops or table tops, use Diamond Metallic Powders as accent colors on top of your base coat. This adds depth and helps to create a beautiful, natural 3D design. Mix directly into Diamond Epoxy or mix with 91% isopropyl alcohol and spray over the surface in random patterns, creating a granular effect similar to real stone.

Metallic Powder comes in 4 sizes. Smallest size (Xtra Small) comes contains 25 grams, Small Size contains 60 grams, Medium size contains 175 grams, and Large size contains 400 grams.



Mica Flakes

These large mica flakes can be used for flake floor systems as well as for decoration on countertops. These flakes can be purchased by the pound and work well for chemical resistant flooring.

Each Mica Flake bag, comes in 1 pound.

Coverage

- Full Broadcast - 2lbs - 100 sq/ft
- Mid Broadcast - 1.5lbs - 100 sq/ft
- Partial Broadcast - 1lbs - 100 sq/ft

